



Creek Chatter

PRESIDENT'S CORNER

by Ryan Dry

I recently enjoyed the diverse aspects of our neighborhood when two sets of neighbors moved in within the last year. One set was a good friend of mine, his wife, and their one year old daughter. The other were my parents who moved into the neighborhood wanting to down-size and find a one-story home. What is interesting to me is that the young couple with their new child loves this neighborhood as much as my parents looking to simplify things. Both sets have made new friends and are thrilled to be involved in the community of Pitman Creek. It speaks volumes for the "community" portion of the neighborhood – both sets have been welcomed with open arms.

We have had a good year so far. We have new board members, Melissa Fischer, who has volunteered to fill our position as Treasurer on the board. Brian and Sunny Ostrander have volunteered to be the Crime Watch chairs on the board. It is always nice to have new folks join us on the board and we appreciate them volunteering their time.

Once again, the Fourth of July Party was a hit. It is only in its second year since we brought the Fourth of July parade back, but the decorated bikes, wagons, and even a golf cart seemed to be up a notch from last year. It was fun for all the children, parents, and grandparents who participated in the parade or cheered this year's participants on. The Fall Festival Party held in October was also a fun time as was the Pitman Creek Tour of Homes which showcased a few houses with newly remodeled kitchens and bathrooms. Finally, we will finish with our Holiday Party in December. There will be many more details to come in the rest of this newsletter and in the coming weeks.

If you haven't done so already, please pay your \$100.00 dues. As the checks roll in, we have many exciting projects and ideas in the works. We look forward to implementing them in the coming years and are grateful that the increase in the dues has been so well-received.

INSIDE THIS ISSUE:

Crime watch.....2

Yards of the Month4

Beautification Update.....6

Home Tour7

We're on the Web!
WWW.PCEHA.ORG

SPECIAL POINTS OF INTEREST:

Insert, envelope for Membership Dues

PCE Women's Club

PCE Social Events

General Meeting - Dec. 1st



Sad news since our last newsletter. Good friend and longtime board member Jack Hatchell passed away on June 28, 2008. All of us who knew Jack were better off because of it. His devotion to our community and neighborhood will be missed along with his friendship. Jack served on our board for a countless number of years and always tried to make it to board meetings, even through his chemo treatments. The way Jack lived his life it is not cliché to say he left the world a better place than when he found it. We will miss you Jack.

PCEHA 2008 Board of Directors

President

Ryan Dry 972-578-8249
rdry@lwhllp.com

1st Vice President (Membership & Website)

John Byers 972-424-2716
jbyers2@gmail.com

2nd Vice President (Socials)

Tracey Dry 972-578-8249
traceysdry@yahoo.com

Secretary

Sharrie Wagner 972-424-5203
slwsharrie@aol.com

Treasurer

Melissa Fischer

Architectural Control

*Pat Hatchell 972-424-1365
pathatchell@hotmail.com

Beautification

Charles & Stephanie Milby 972-516-0350
samilby@verizon.net

Children's Events

OPEN

Crime Watch

Brian & Sunny Ostrander

Newsletter

Kirsten H. Geiser 972-398-6898
kgeiser@tx.rr.com

Welcoming/Hospitality

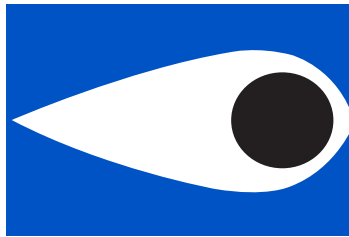
OPEN

PC Women's Club President

Karen Gedemer 972-424-6070
kegedem@us.ibm.com

*returning 2008 Board Members

NEIGHBORHOOD CRIME WATCH



by *Kirsten Geiser*

WOW! What a safety meeting we had this summer!

First off, I want to thank Charles & Stephanie Milby for opening up their house to all of us to host this meeting, and what a meeting it was. I wish I thought to have our neighbors sign in, because we had a good 40 people attend on this short notice.

Secondly, A BIG Thank You to officer Mark Dawson, and his family. Officer Dawson doesn't technically service our area, but our assigned officer representative was on leave and he took my call and came out to help educate and inform us for hours! Thank You Officer Dawson!

Below are some important things that were covered for all of us to stay safe and aware:

- There is a free class available the first three Tuesday's in August at the Liberty Rec Center (Behind Vines) education on
 - Burglary
 - ID Theft
 - Personal Protection

I suggest everyone to attend this. You can get more information on www.plano.gov

- There is also a 13 week class (13 Thursday's) for the Citizen Police Academy. There you will be put into the driver's seat of a Plano Police officer – literally. You can also gain more information on www.plano.gov
- Plano Police will come out to assess your home's security by appointment. They will help you change what a thief sees as a "open door". Go to above website.
- More burglary's happen in the daytime while we are away from home.
- Robbers are smarter than I thought. (I have this note actually)
- As the Sun goes down, your shades need to go down! Even for your back yard facing windows and doors!
- Take your garage door opener with you whenever you leave your vehicle – anywhere! And if your vehicle has the door programmed into a button, make sure you only park IN your garage.
- Your garage opener is a key to your house.
- Always lock your door from the garage into your house – always.
- If you hide a key in your yard – DON'T. If you have to have a key outside to feel better. Ask your neighbor if you can hide it in their yard. Your key will not fit their door, and vice versa.

- If you have an automatic garage door opener, you have the rope that hangs from the track with the handle so you can pull to release the door and use manually. Cut the handle off – today. That is easily used to access your house by a thief by pressing the top panel in just enough to insert a wire hanger or such to release the door and come right in. Do not tie a knot at the end either.
- Landscape / security lighting helps! But keep them on all night (not motion sensors). If your lights go off at 10 p.m. they know you are in bed. Hmmm.
- A peep hole is very important.
- Never shy away from a “stranger” knocking. Don’t answer, but be loud and call on parents, or spouse (even if they are not there). (Honey, are you holding the dog . . .)
- If a knock on the door is said to “be the police”, stall while you call 911 to confirm. Never open the door even to a uniformed officer without verifying.
- Purchase a “Door Stopper” this is the name brand – sold at Home Depot. This will help your door from being kicked in.
- Also, purchase a 12” strike plate (what the dead bolt and knob rest in your door frame) this is also sold at Home Depot and the anchor screws are 4” so they will attach to your supporting studs, not just the frame.
- For French doors and the like, go to www.taylorbrothersdoorlock.com This will provide you with the strength you will need on those doors.
- The #2 deterrent for robbers is a dog. Big as Schatzi, or as small as a Chihuahua. They make noise!
- The #1 fear a robber has when breaking in to a property? The owner has a firearm. For information on classes and education
 - o www.bullettrapinc.com
 - o www.targetmasters.com
 - o www.dfwgun.com
- Pepper spray is good too. To obtain the stuff the police use go to:
 - o Regional Police Supply, 1410 Summit Plano, TX
 - o O.C. 10% Strength in stream or cone
- Alarm systems are great – BUT – if you have your alarm set at night and it is set off your most likely lose our home phone service. Cell phones are not as reliable AND they don’t know where YOU are. Something to think about.
- Call 911 one morning or mid-day and when dispatch answers say you are calling to verify information. Make sure your phone, address and occupants names are correct. It is okay to do this, and do it BEFORE an emergency hits. If you call from home and hang up before they answer they will call back, if you do not answer police will be dispatched (sometimes even if you answer and say it’s an accident)
- If you see something “that just isn’t right” call 911! If it a suspicious car, people, neighbors still not home – whatever! CALL! Officer’s biggest gripe is we do not call on such occasions. That’s what 911 is there for. And yes, call 911 – not Non-Emergency. 911 is there to protect us, not just when there is a fire, or accident, etc.

In closing, just remember, let us not be victims, and let us all be safe in our great neighborhood! Together we can deter criminals to not have a chance at our homes, and in our neighborhood.

See you in class

Newsletter Team

Editor & Publisher

Kirsten Geiser

Content Acquisition

Ryan Dry

Distribution

Coordinator

Libby Crowley

Distribution Assistants

Cindy Herndon

Kent Crowley

Proofreaders

Kirsten Geiser

Sharrie Wagner

TEENAGERS...

If you are interested in contributing to a teen page, please forward your information:

- Short Stories
- Important Events News, Cool Stuff,
- Photos with description
- School Trip Stories, i.e. Europe photos
- Theatre Productions, reviews
- Quotes
- Poems ... etc.

Send to:

PCENewsletter@aol.com

Profit & Loss Prev. Year Comparison January-August 2008

	Jan - Aug 08	Jan - Aug 07
Income		
Earned revenues		
Membership dues - individuals	14,345.00	15,050.00
Total Earned revenues	14,345.00	15,050.00
Total Income	14,345.00	15,050.00
Expense		
Non-personnel expenses		
Mailing services	0.00	326.96
Newsletter	1,174.51	915.76
Postage, shipping, delivery	175.00	56.51
Printing & copying	450.00	0.00
Web Hosting	99.00	0.00
Total Non-personnel expenses	1,898.51	1,299.23
Occupancy expenses		
Landscape Maintenance	4,886.66	2,696.54
Repairs	1,695.00	0.00
Seasonal Landscaping	0.00	2,200.00
Utilities	94.71	111.68
Total Occupancy expenses	6,676.37	5,008.22
Reconciliation Discrepancies	4.14	0.00
Travel & meetings expenses		
Socials & meetings	3,227.27	1,699.14
Total Travel & meetings expenses	3,227.27	1,699.14
Total Expense	11,806.29	8,006.59
Net Income	2,538.71	7,043.41

Balance Sheet Prev. Year Comparison As of August 31, 2008

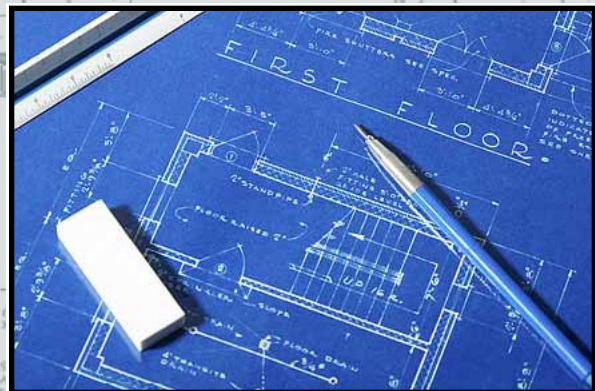
	Aug 31, 08	Aug 31, 07
ASSETS		
Current Assets		
Checking/Savings		
Beautification Savings Legacy A	5,067.97	5,067.97
Legacy Texas Operating	9,962.83	12,405.98
Total Checking/Savings	15,030.80	17,473.95
Total Current Assets	15,030.80	17,473.95
TOTAL ASSETS	15,030.80	17,473.95
LIABILITIES & EQUITY		
Equity		
Temporarily restrict net asset		
Use restricted net assets	6,197.97	6,197.97
Total Temporarily restrict net asset	6,197.97	6,197.97
Unrestrict (retained earnings)	6,294.12	4,232.57
Net Income	2,538.71	7,043.41
Total Equity	15,030.80	17,473.95
TOTAL LIABILITIES & EQUITY	15,030.80	17,473.95

ARCHITECTURAL CONTROL

There are many issues that face our entire neighborhood as each of us make choices in additions and updates to our homes and property here in Pitman Creek Estates. Our Covenants and Deed Restrictions require approval of any planned changes (e.g., new roof, paint color change, fencing, new or modified structures). Please contact the Architectural Control Committee Chairperson, Pat Hatchell at 972-424-1365 or pathatchell@hotmail.com to discuss your changes.

Discussing those changes with any neighbor that may be affected most directly can certainly make a big difference in how well the change may be received as well. Front yard structures, side yard usage, driveways visible from the street impact our entire neighborhood and property values. RVs, boats, tree limbs, children's play structures, all need to not constitute a nuisance or eyesore for others.

These are all hard subjects to address, but extremely important to the quality of life and pride we have in our homes and Pitman Creek Estates. We would like to invite you to share your thoughts and perhaps serve on the Architectural Control Committee. We need to review our guide lines and restrictions.



PCWC - YARDS OF THE MONTH

May 2008—1924 Sandpiper Lane—Nancy & David Moderi.

A beautiful medley of colors framed the house. The array of colors in the pansies, petunias, lambsears, begonias, dusty miller and roses was a feast to the eyes. A garden bench and lawn goose added interesting touches to the floral assortment. We are proud to give this award to Nancy and David before they leave our neighborhood for their new home in Dallas.

June 2008—1205 Delmonte Circle—Dallas & Janet Ervin.

In the midst of a well manicured lush lawn, colorful perennial plants were displayed in several flowerbeds which were surrounded by attractive cement edging. The variety of flowers included larkspurs, day lilies, balloon flowers, Shasta daisies, peonies, snap dragons, columbines, Persian shields, tulips, verbena, lantana, ferns, sedum, daffodils, candy tufts, phlox, rose mallow, hydrangeas and asters.



July 2008—1700 Glenwick — Ernest & Leticia Gonzalez

There is a lovely home on the corner of Spruce & Glenwick, complete with a graceful circular drive. Two trees, a live oak, and a beautiful Spanish Oak with the most unusual light green almost glisten in the sun light. There's a lovely combination of flowers in a bed under trees, and up near the house. Roses are near the entrance, along with a wreath on the door blended in pink tones. Some of the many plants are periwinkles, begonias, and coleus. Take a walk and stop to smell the roses!

August 2008 YOM—1204 Monterey Circle—Alan & Vallery Daniel

A beautiful array of color flowed across the front of this house. The park-like variety of plantings included lamb's ears, caladiums, begonias, and liriopse, set off by well-trimmed crape myrtles provided a well balanced, inviting setting. The thick green carpet of grass, with the presence of a resting neighborhood rabbit, added to the perfect scope of landscaping for this lovely home. The committee is pleased to give this month's award to the beautiful yard of Alan and Vallery Daniel.

September 2008—Homer & Marlene Montgomery—1800 Sandpiper Lane

The assortment of plantings included several different and unusual perennials along with many annuals. The wide variety of colors also made this yard very appealing to the eye.

Neighborhood Beautification



Many of you may have noticed during the heat of the summer, our watering system has been inadequate. Due to the age of the sprinkler system, many parts have needed to be repaired and updated. We have had to allocate money to repair the system. Hopefully, we will see the rewards of this necessary expense in the upcoming seasons.

We are still working with the city on the possibility of improving the bridge on Carmel and enhancing the entrances of our subdivision. A meeting is set for the first week of October with a neighborhood planning representative to discuss

the improvements. Plano is low on funds and is not in the position to help fund projects, so please help by making a yearly donation to the beautification fund if you haven't already.

It is also important for us to remind you that Pitman Creek Estates has set guidelines for property maintenance. The board has a new policy for sending out letters for those homeowners that are not in compliance. If these requirements are not met at that time, then the PCEHA board will notify the city.

The guidelines are as follows:

1. Weeds/grass over twelve inches high are a violation of Plano City code. In addition, clippings must be mulched or cleared after mowing.
2. Fences: Any and all broken, lose or damaged parts having a combined total area of twenty square feet shall be replaced or repaired within sixty days of notification.
3. Trees along streets and alleys must be trimmed to above 14 feet of these surfaces. In addition, branches of trees and bushes along the alleys must be trimmed one foot back from the concrete surface. Trees overhanging sidewalks must be trimmed to above 7 feet above the concrete surface.
4. The homeowner/tenant is responsible for maintaining the area between the curb in front of the house to the middle of the alley (or back property line if there is no rear alley) free of litter, weeds, trash and debris.

Don't forget to put your Fall pre-emergent down soon!

Thank you for helping make Pitman Creek Estates a beautiful place to live!

Charles and Stephanie Milby



Pitman Creek Estates Homeowners' Association

Socials

We had a busy summer with the BBQ and pool party at the Texas Pool in June and then the Fourth of July Parade. Thank you to all of our parade participants. It was a terrific day filled with American pride and cute kiddos.

Thanks to everyone for coming to the PCEHA Fall Harvest Party at the Schlemmers, Drys and Ostrandors. It was perfect weather to celebrate Halloween, including pumpkin carving, bobbing for apples, and making smores. It is always so great to get together with our neighbors and friends.

We also had our first Pitman Creek Home Showcase Tour on November 9th. It was a great success and hopefully served as an inspiration to you. A very special "Thank You" to the Evans, Holms, Asels, and Mulls for sharing their beautiful homes with all of us.

~HOLIDAY EVENTS~

First Annual Christmas Light Competition

Pitman Creek is known in Plano as a one of the great Christmas Light neighborhoods. We decided to up our game this year and we will have a street by street competition to see which street has the most holiday spirit! We need a block captain for each street to coordinate your street's lights. Please email me if you are interested in acting as the block captain.

Holiday Cocktail Party will be hosted by Jenny and Chad DUEWALL at 1901 Gardengrove Ct. on Saturday, December 13, 2008 at 7:00 p.m.

Cookies and Caroling will be held Sunday, December 21st at 6:00 at Tracey and Ryan Dry's home at 1304 Gardengrove Ct.

Hope you will be able to share in the joy of the holiday season with us!

PITMAN CREEK WOMEN'S CLUB

PCE Women's Club News



OFFICERS 2008-2009

(L-R) Valerie Kirkpatrick, Karen Gedemer, Pat Harbour, Su Gates, Randi Yager, Amy Pyrz and Pat Jackson. Not pictured: Judy Deal and Maryann Ruppel.

President

Karen Gedemer

Membership

Randi Yager

Vice Presidents

Pat Harbour

Pat Jackson

Historian

Su Gates

Secretary

Amy Pyrz

Parliamentarian

Maryann Ruppel

Treasurer

Valerie Kirkpatrick

Sunshine

Judy Deal

Pitman Creek Women's Club

The Pitman Creek Women's Club is a social organization for our neighborhood. We meet on the 2nd Tuesday of each month, September through May. (Please note special meeting date in February.) Meetings are hosted in member homes with occasional offsite events. While some business may be conducted, our meetings are primarily social so we can present a variety of programs throughout the year. In addition, we have sponsored donations to Adam's Animals, sponsored the Adopt-a-Highway program for 15th Street, and provided plants and landscaping funds for neighborhood entrances. We encourage all women of Pitman Creek Estates to join our organization. Membership dues are \$15 a year which helps pay the cost of our programs. For additional information about Pitman Creek Women's Club, please contact membership chair Randi Yager at 972-633-9103.



Valerie Kirkpatrick and Ruth Tycz



Patty Kreider and Pat Jackson



Angela Asel and Holley Carroccio



Maryann Ruppel and Ruth Parker

November 11, 7:00 p.m.

Jewelry Making

Come and join us as we create jewelry in time for the holidays. You'll get hands on directions on how to make pieces for yourself or to give as holiday gifts to your friends or even your neighbors -- hint, hint, hint.

Hostess: Toni Degnan Co-Hostess: Pat Harbour
1032 Sunswept Terrace
972-633-0401

December 9, 7:00 p.m.

Holiday Party/Gift Exchange

Our annual holiday dinner and gift exchange is all about fun and fellowship in celebration of the holiday season. Bring a side dish or dessert and a wrapped gift (approximately \$15 value) for our "Chinese" gift exchange.

Hostess: Rose Akin Co-Hostess: Su Gates
1717 Edgewater Drive
972-423-5497

January 13, 7:00 p.m.

Updating your Home

Diana Weiss will give us tips and strategies so your home can be the awe of the neighborhood. She has expertise in remodeling and home redecorating. She's got it all! We're also looking into sponsoring CPR education on a Saturday this month.

Hostess: Pat Jackson Co-Hostess: Karen Gedemer
1717 Sandpiper Lane
972-424-7644

February 14, 7:00 p.m.

Sweetheart Party

This Saturday evening is dedicated to all sweethearts and is always a fun event. Great food and fantastic decorations always make this fun. We usually manage some good music too. Remember to wear something red!

Hostess: Patty Kreider Co-Hostess: Pat Jackson
1732 Sandpiper Lane
469-467-2277

March 10, 7:00 p.m.

Landscaping

A landscaper will discuss adding balance to our yards. They will give us do's/do not's and we'll have an interactive container gardening activity. Our Officer Nomination Committee will be appointed this evening too.

Hostess: Ruth Tycz Co-Hostess: Maryann Ruppel
1700 Carmel Drive
972-578-7065

April 14, 7:00 p.m.

Bunko Party

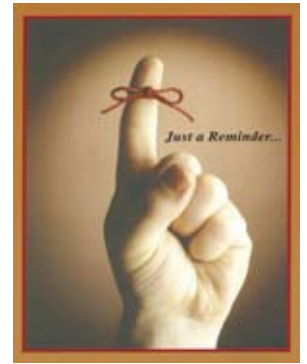
This is the only Bunko night that we've planned for this year. You need no experience. Come and join us for this must attend and fun evening. Please RSVP for table planning purposes. We ask that you bring \$3.00 for our prize fund.

Hostess: Donna LeVecchio Co-Hostess: Toni Degnan
1706 Carmel Drive
972-881-1218

Just a reminder ...

Membership Dues & Resident Information Updaes are due!

To make it as easy as possible, we have enclosed an ADDRESSED ENVELOPE with a one page Directory Update Form and Questionnaire to review and update as needed. Please note your comments, suggestions, and points of interest (i.e. neighborhood beautification projects), on the enclosed form. Remember, the Membership Dues and Directory Update Forms are needed as soon as possible. We appreciate your assistance in helping us as a community and keep our neighborhood beautiful! Thank you!



Thank you Pitman Creek Homeowners for sharing the following information...

- Plano City website at <http://www.plano.gov/Departments/PublicWorks/default.htm>, you can inform the city of necessary repairs to sidewalks, signs, etc. So far, we have used it to get street signs realigned and a street light repaired.
- The letter carrier is not required to deliver mail to a blocked mailbox. You can find our policy on delivering mail to blocked mailboxes at the following link:
http://hdusps.esecurecare.net/cgi-bin/hdusps.cfg/php/enduser/std_adp.php?p_faqid=6751

If you would like to share information with Pitman Creek Community, please email to: PCENewsletter@aol.com.



Pitman Creek Estates
Homeowners Association
1916 Shadow Trail
Plano, TX 75075

PRSR STD
U.S. POSTAGE
PAID
PLANO, TX
PERMIT #473